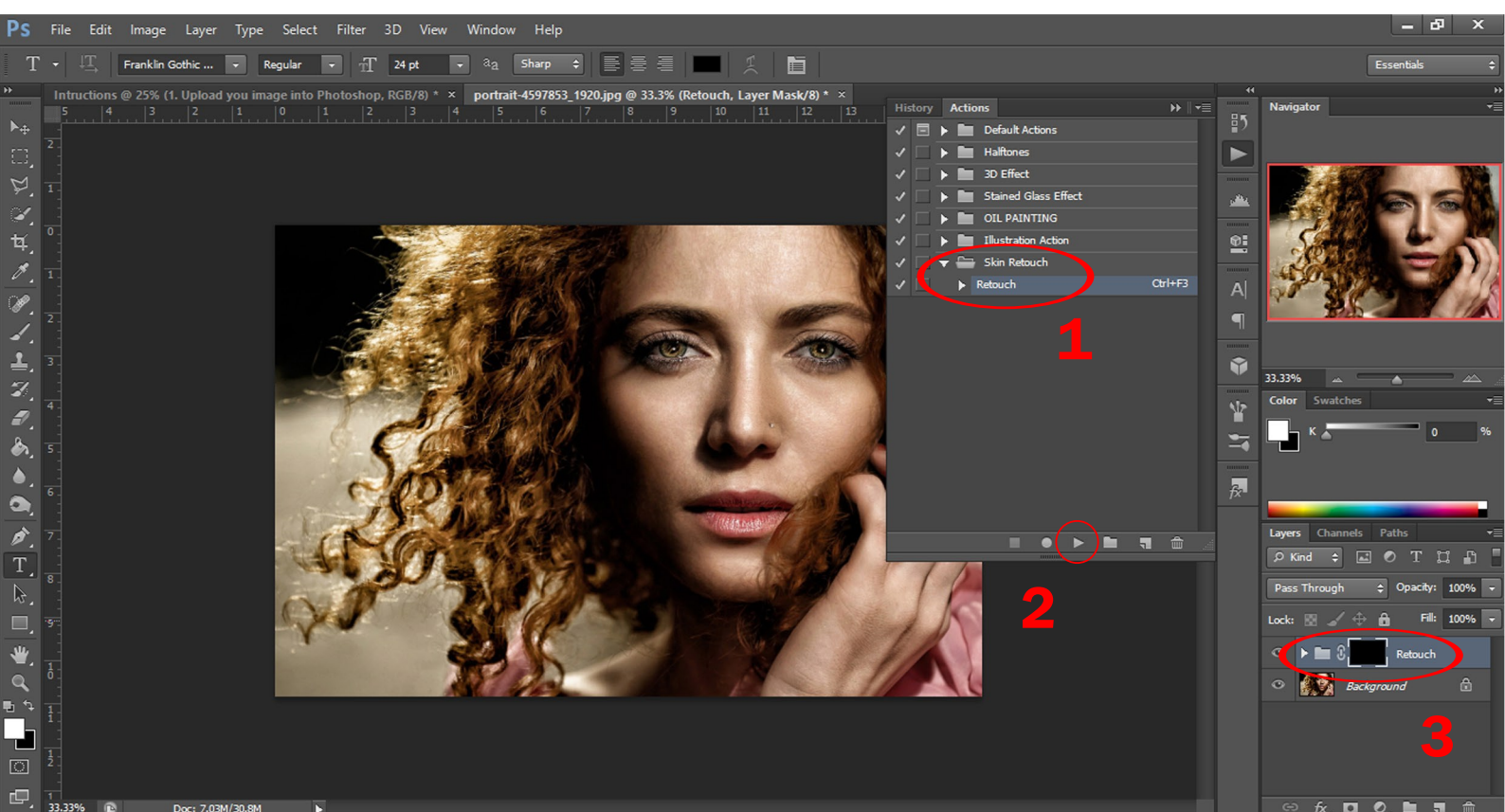
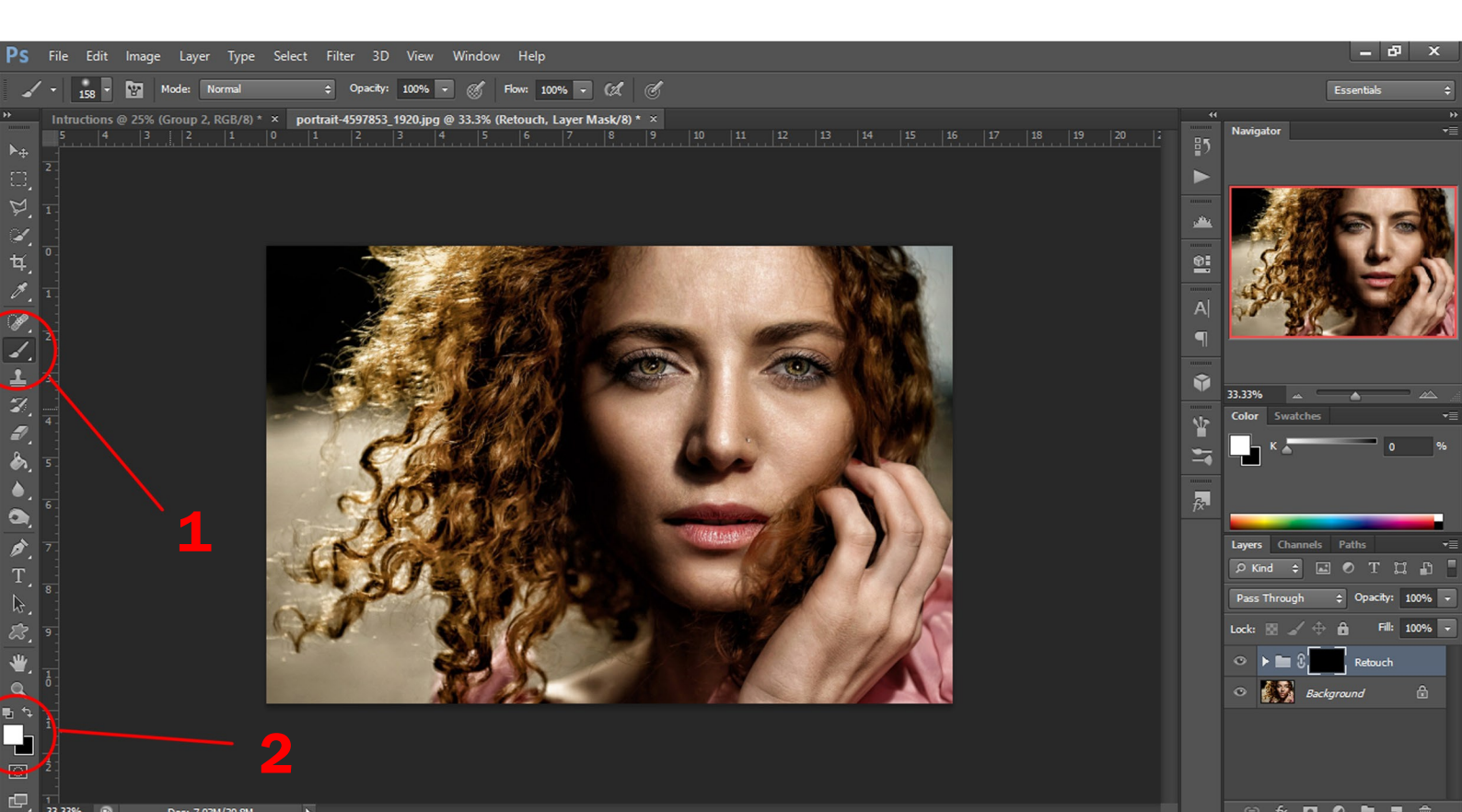


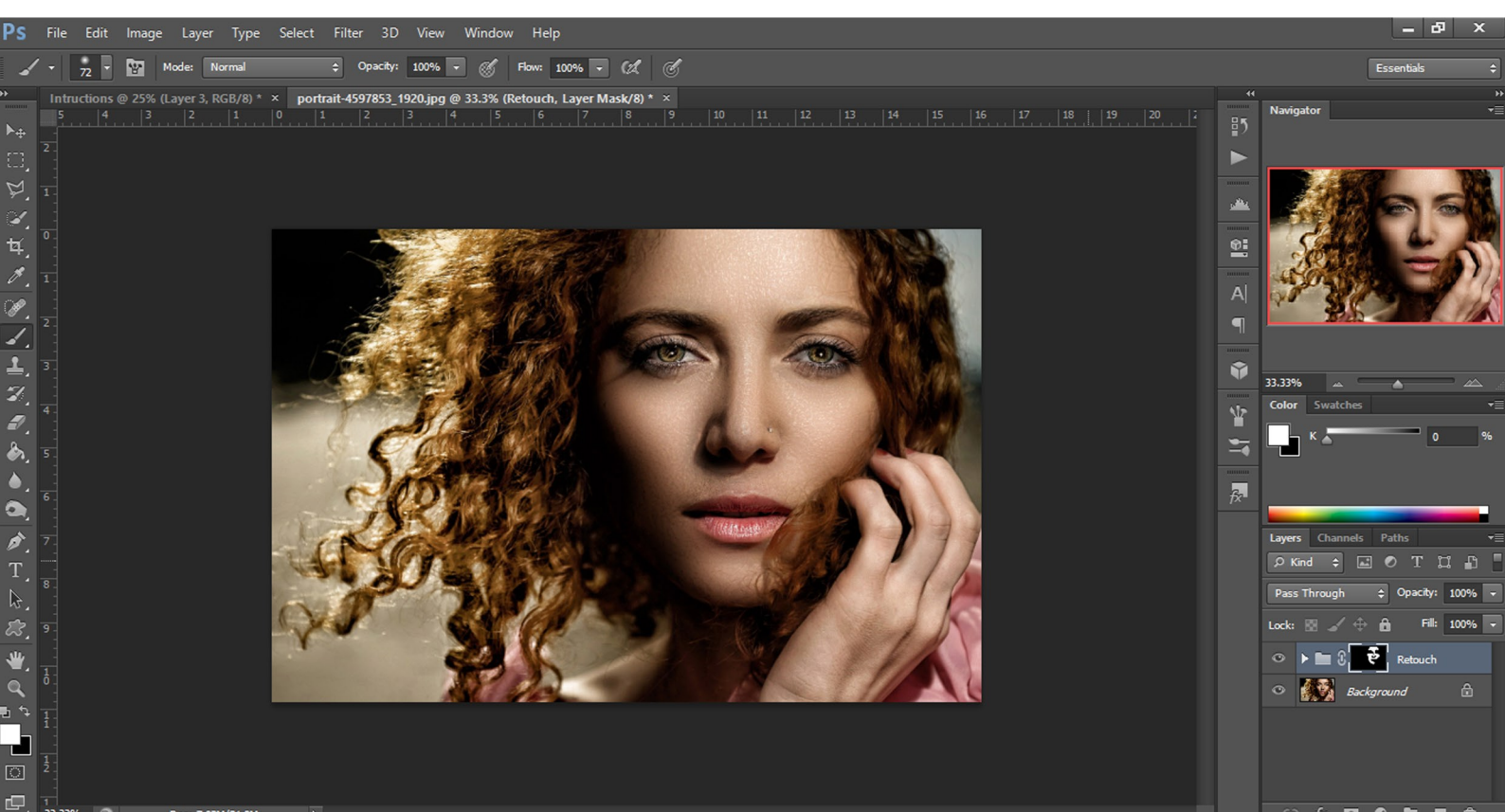
1. Bring your image into Photoshop



2. Upload the Photoshop action. (1) In the actions menu, you will see the 'Skin Retouch' action. Open it up and click 'Retouch'. (2) Hit the play button. (3) You will now notice a new layer.

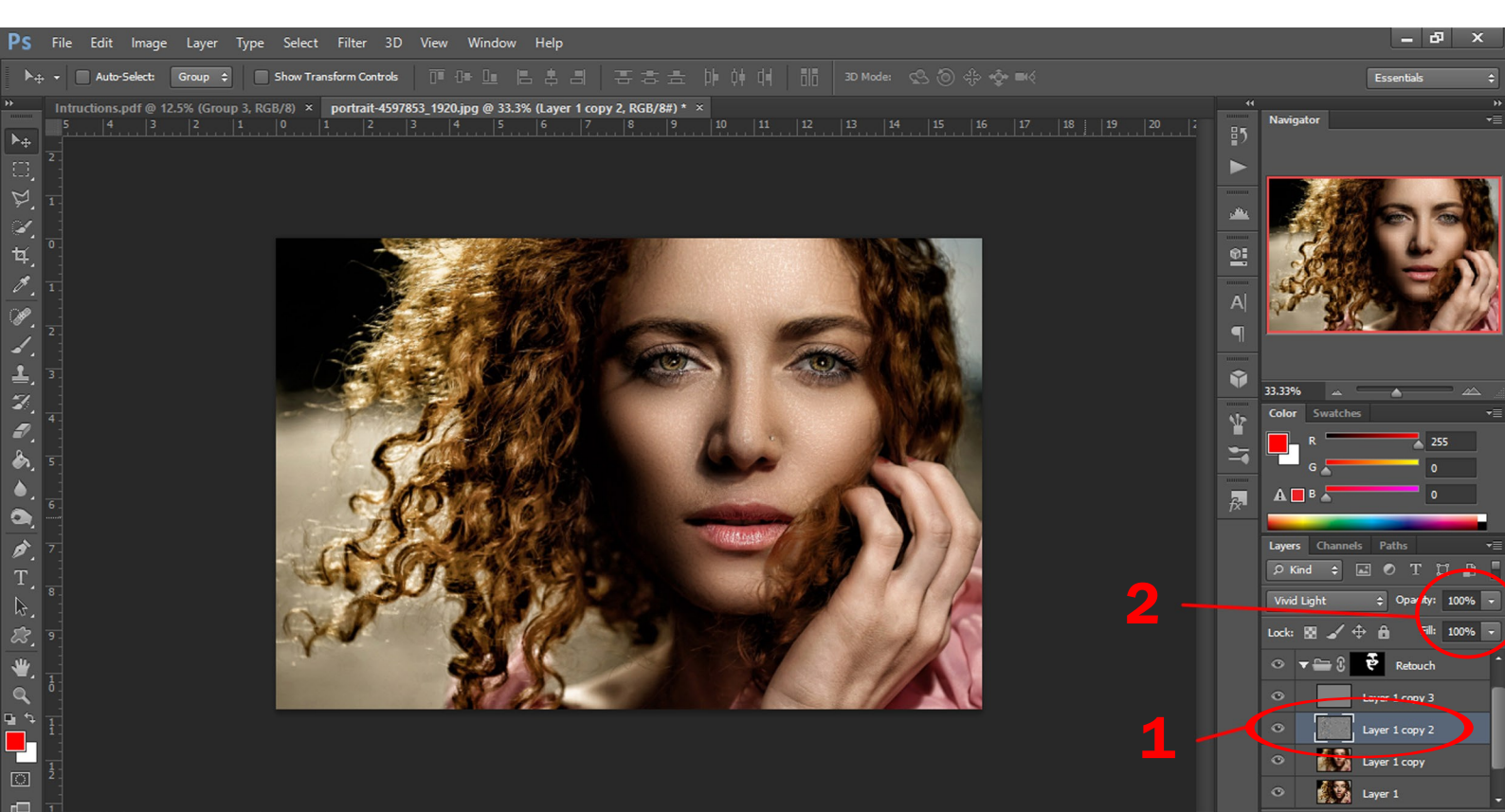


3. With the new layer selected, (1) click the brush tool. (2) Make sure your main colour is white.



4. All you need to do now is brush over the area you wish to retouch. Voila! You can now retouch your image with ease.

If you want to reverse the effect, just switch from white to black.



5. You can open up the drop down menu (1) of the layer and adjust the (2) opacity/fill to 'Layer 1 copy 2' to change how smooth you want the effect to be.