



## -MANUAL-

# SALT & SUGAR GENERATOR - PHOTOSHOP ACTIONS

Thank you for downloading **Salt and Sugar Generator** from Envato.  
For any support question or feedback feel free to send me an e-mail through my pro-file page - **LINK**.

**-BlackNull**

# INDEX -

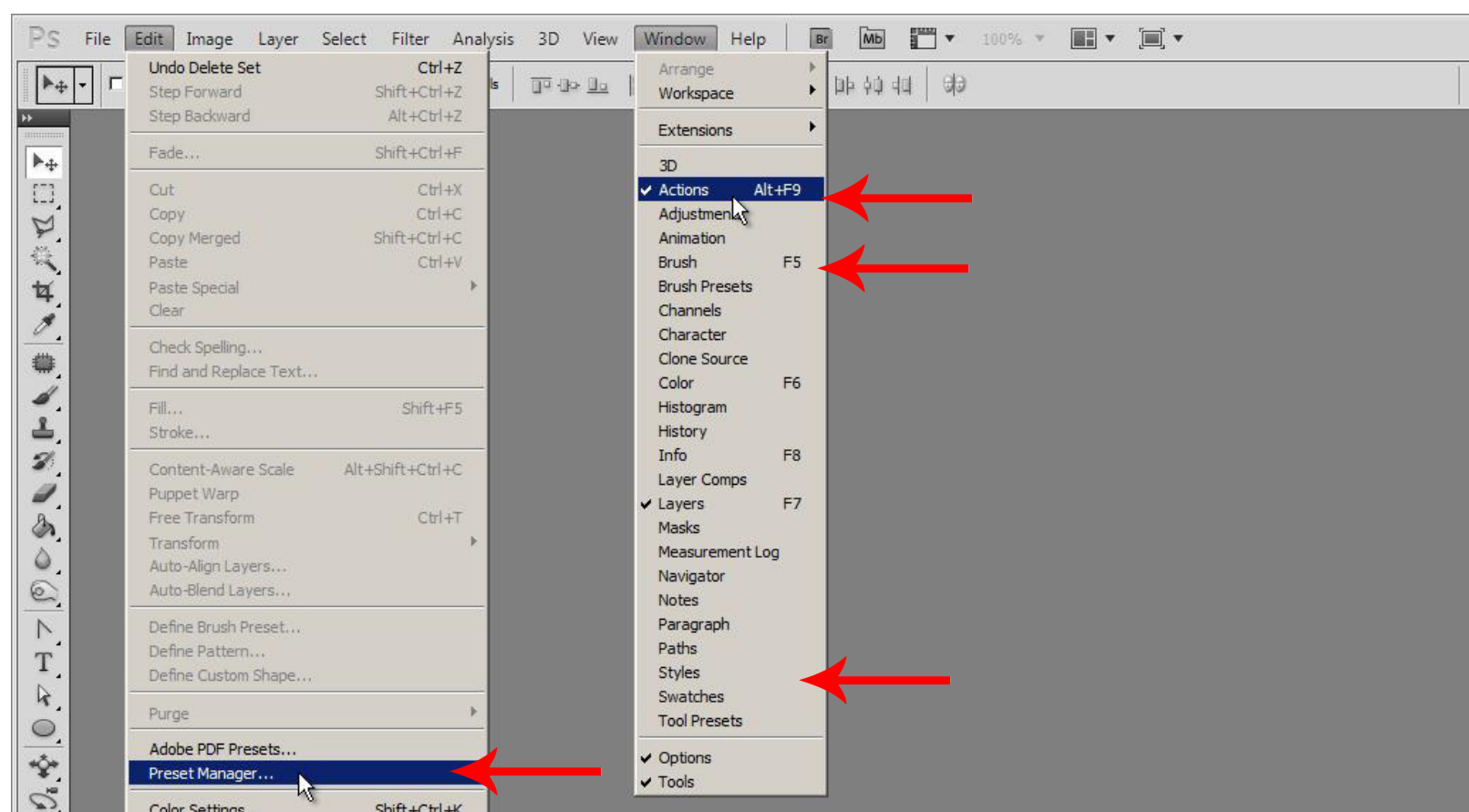
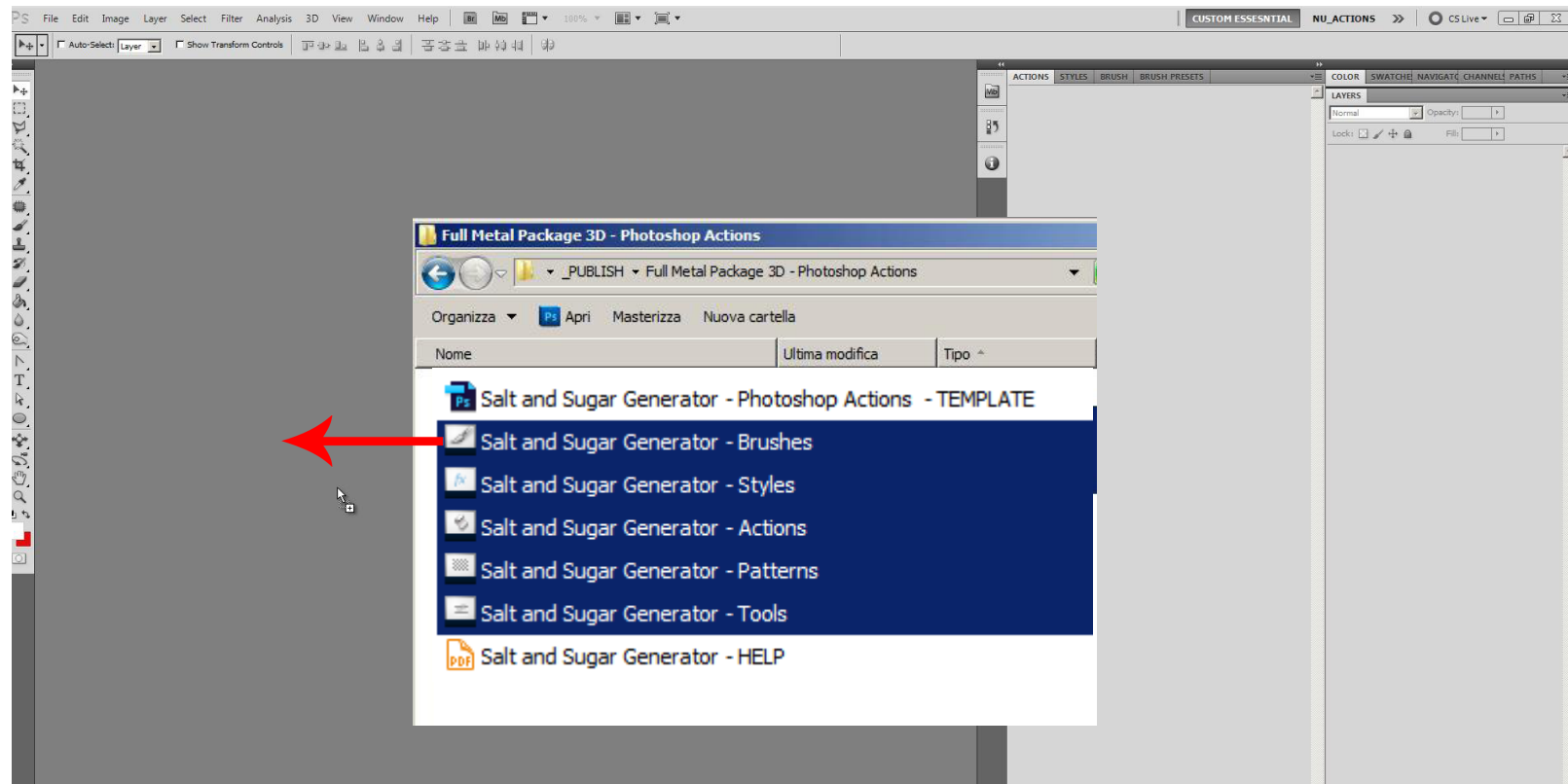
- Installation, Drag & Drop Method
- Installed Content
- Installation, Manual Method
  
- Get Started, The Template
- Get Started, Apply the Normal Action
- Edit the Action Output
  
- The Shape Action
- Shape Action Output
- Custom Shape

Each title is linked to the relative page, click them for a fast navigation

# INSTALLATION - DRAG & DROP METHOD

Open Photoshop, drag & drop the 5 photoshop preset files into the empty canvas. Check that the package is installed, going to menu **Window->Actions** to open the Actions panel.

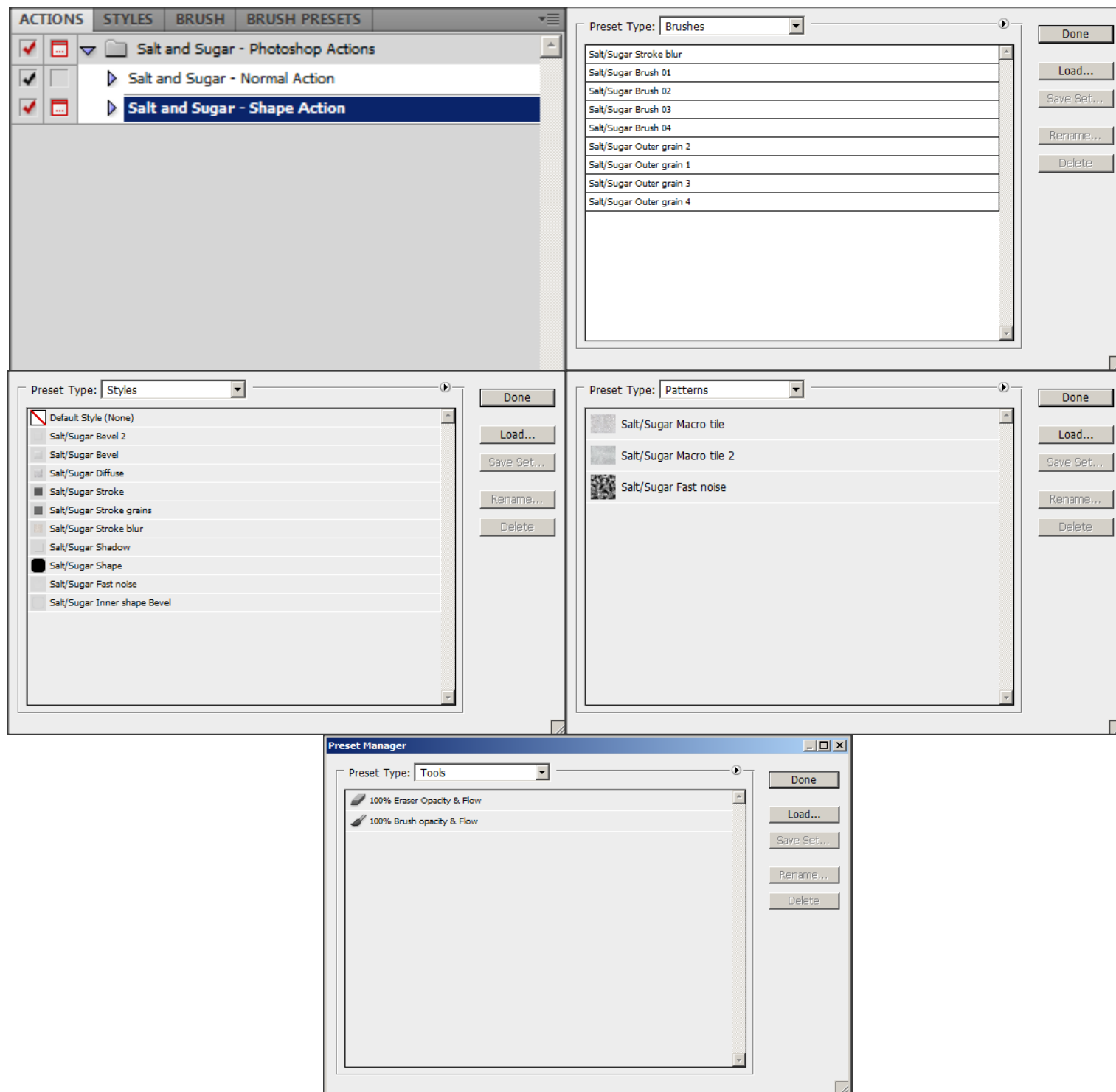
For the other 4 files go to menu **Edit->Preset Manager**, on the top part of this windows you can choose the Preset Type.



# INSTALLED CONTENT

Here is the content just installed, Actions in the action panel, Brushes, Styles, Patterns and Tools are shown in the Preset Manager.

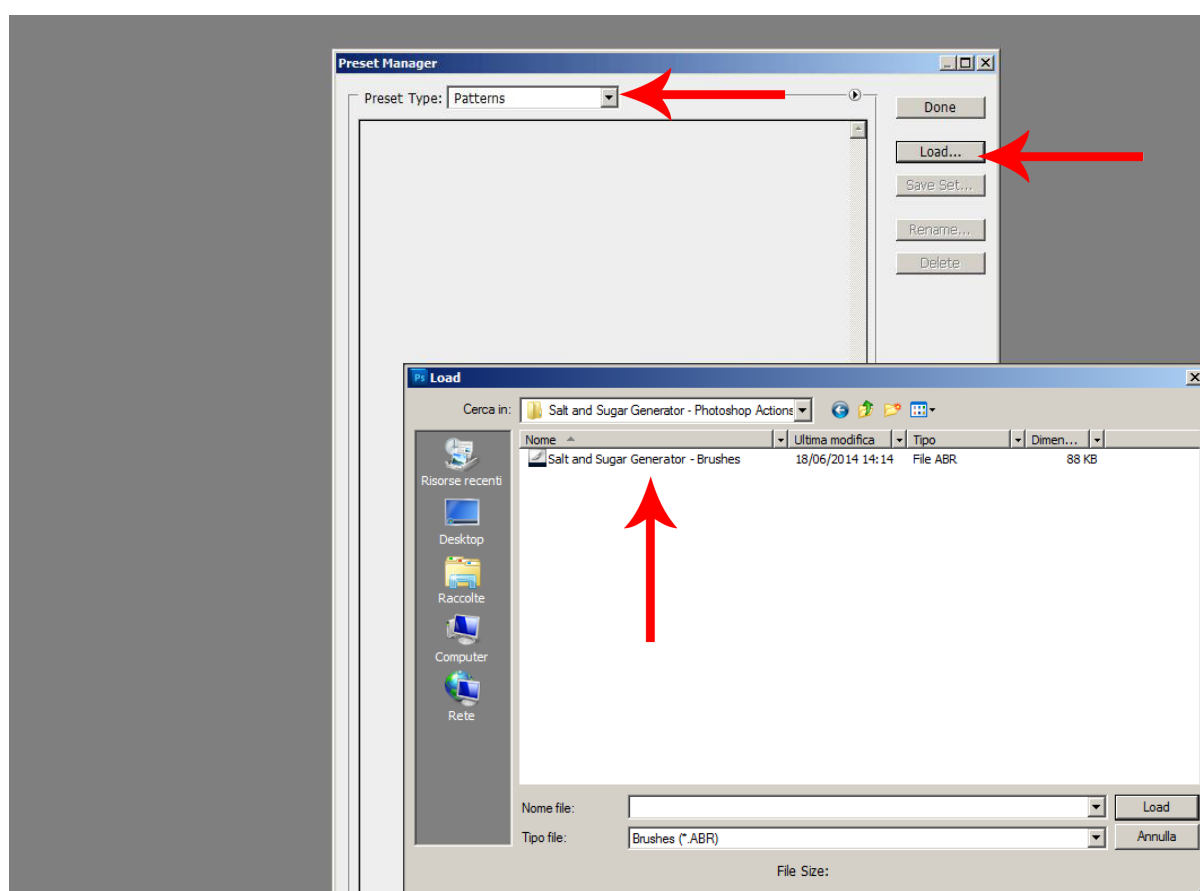
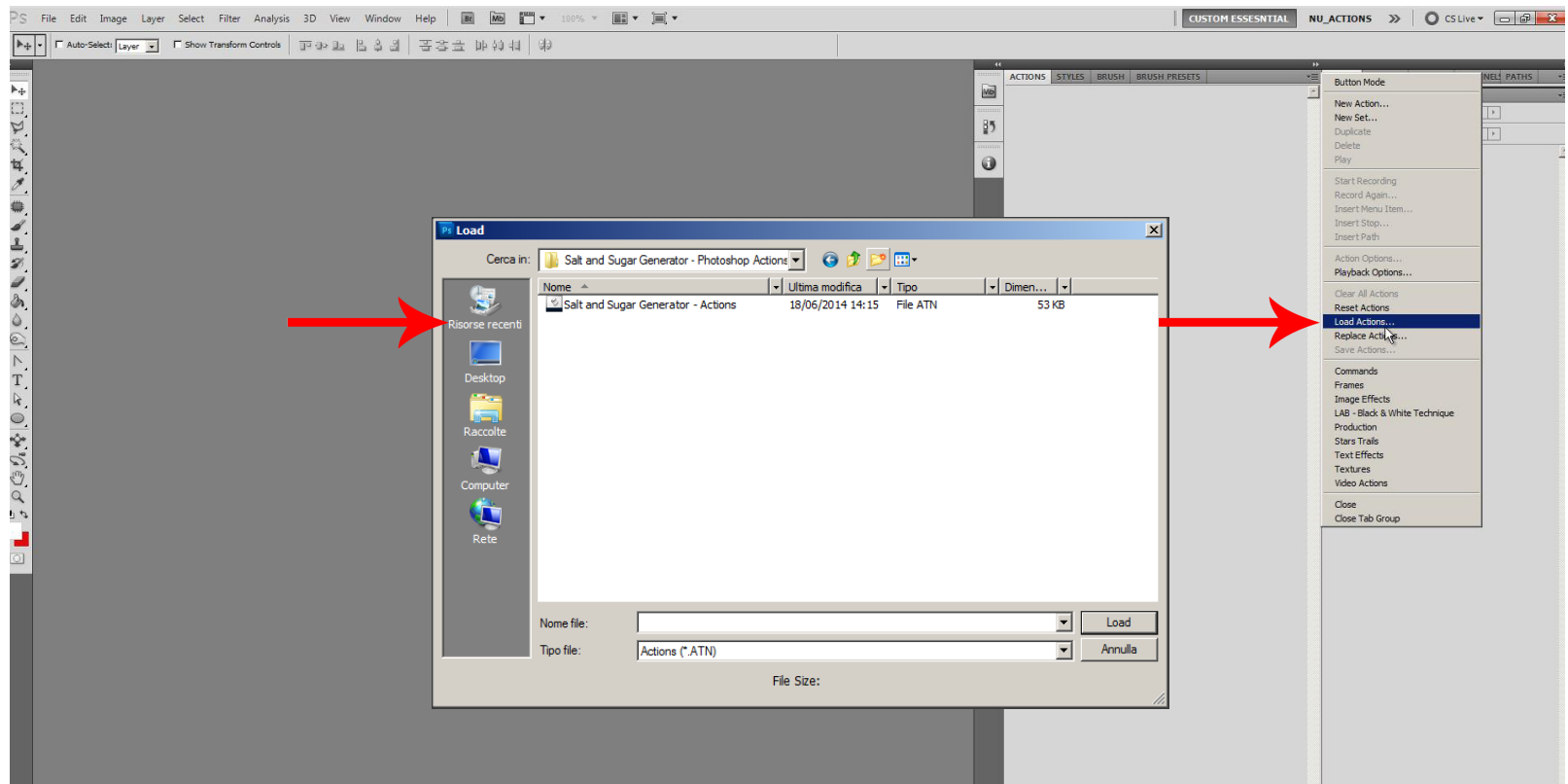
Brushes, Styles and Tools can be checked also through the menu Window.



# INSTALLATION - MANUAL METHOD

Open the action panel and select **Load actions** from the panel's drop down menu (see image below), select and load the actions file.

For the other files a quick way is using the load button in the Preset Manager, change the preset type and load the 4 files one by one.



# GET STARTED - THE TEMPLATE

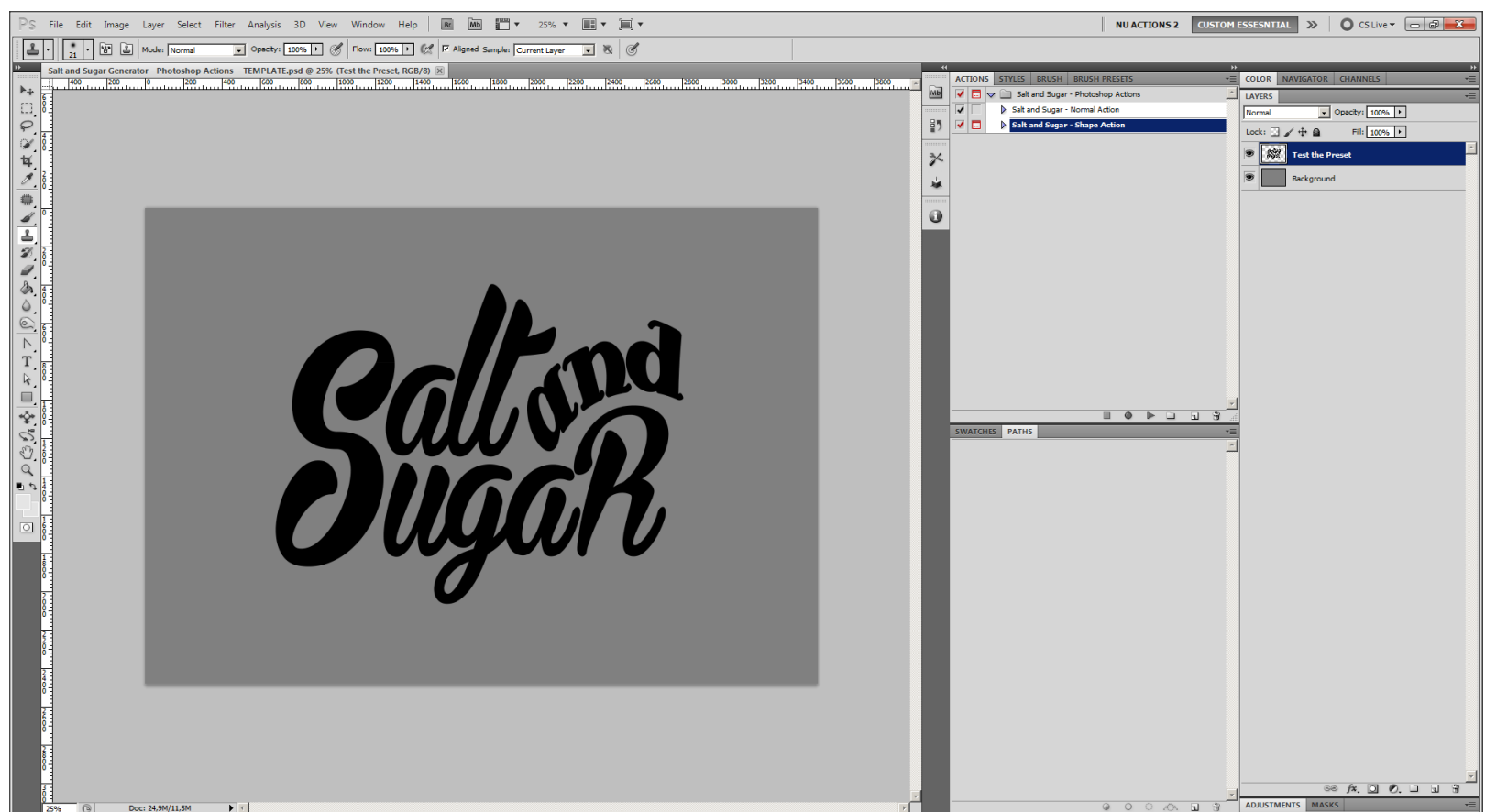
Open the template provided in the package. It's an A4 resolution .psd at 300 dpi, it's purpose is to give a starting point and a reference for the dimensions.

It contains a text and a background. If you're not starting from the Template, make sure that **none of the layers are locked**.

Dimensions of the starting element is very important, the preset was developed for print and it works at high resolution.

The Salt and Sugar Logo provided in the template is a good resolution, make sure that your starting element has similar **or higher** size.

If your starting element is small the output of the actions will look bad.

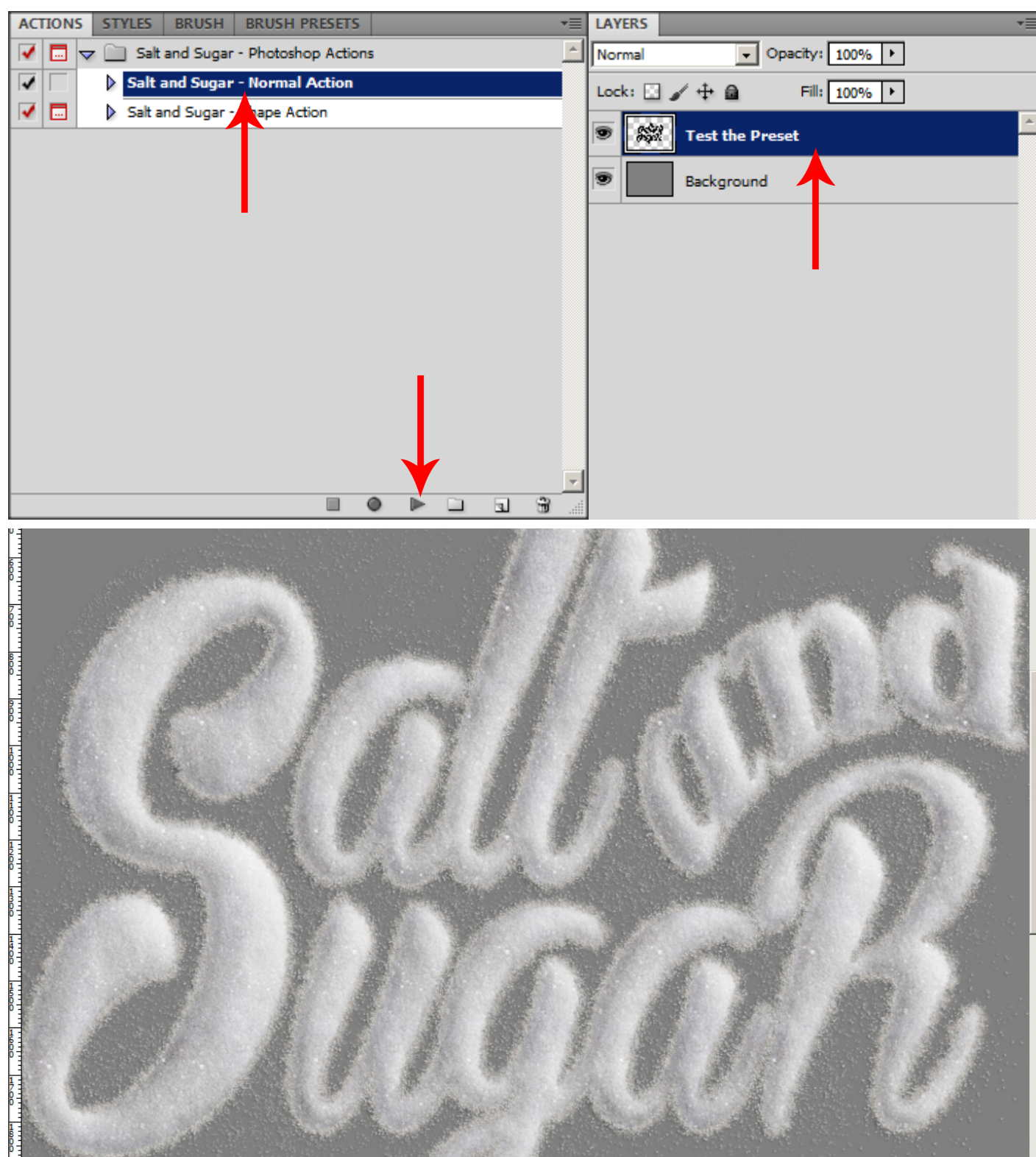




# GET STARTED - APPLY THE NORMAL ACTION

Let's generate a Salt and Sugar effect from the logo in the template

1. select **Test the Preset** Layer (you can start with any text or shape)
2. in the action panel select the **Salt and Sugar - Normal Action** and click play
3. let the action finish, at the the end all the layers generated automatically by the action are packed in a smart object named **Salt and Sugar - OUTPUT**





# EDIT THE ACTION OUTPUT

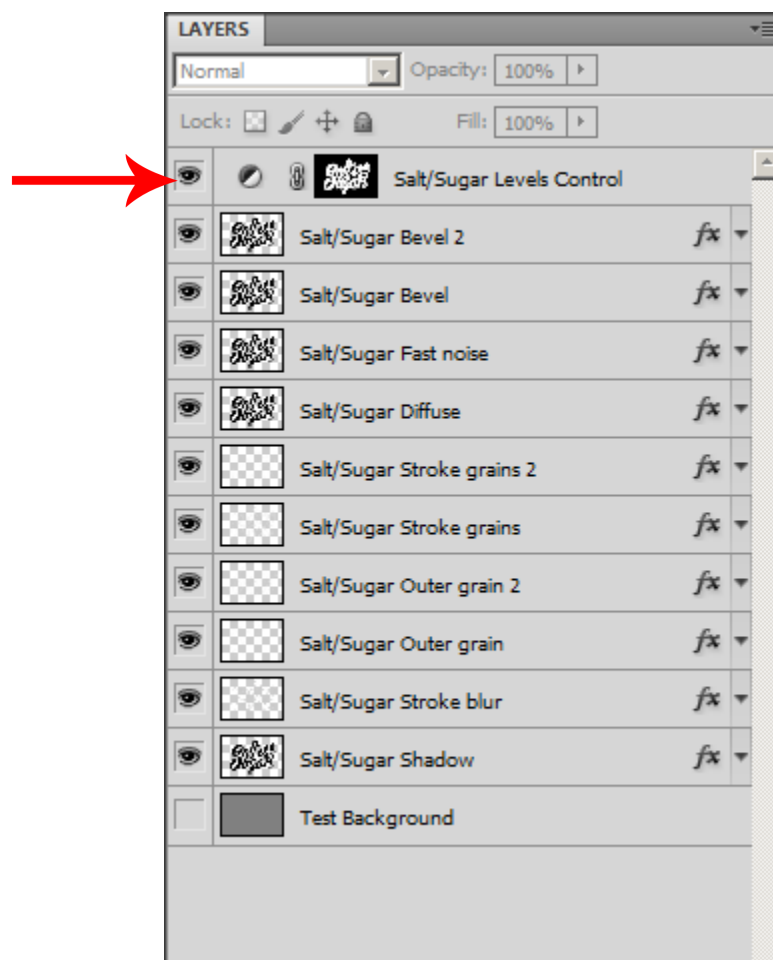
Double click the **Salt and Sugar - OUPUT** smart object to edit it's content (can be done also with **Right click -> Edit contents**)

You can modify all the layers generated by the preset.

The first layer is a Level adjustment layer the last layer is a hidden background to use while editing.

Hide and unhide each layer too see what it does, for example if you want a less “grainy” result you could hide the **Outer grain** layers or **Stroke Grain** layers.

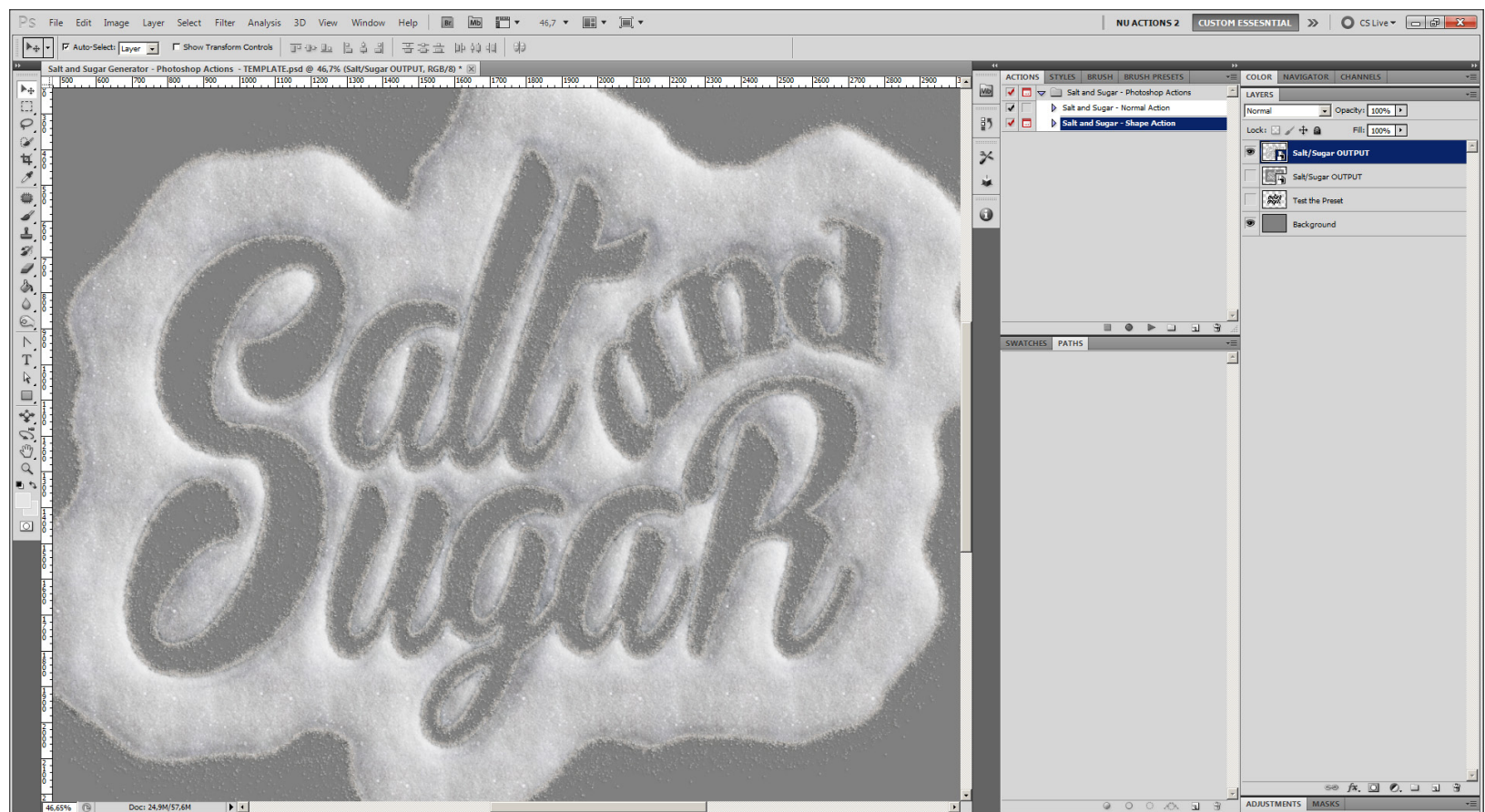
After the editing remember to hide or delete the test background layer, then close and save the smart object



# THE SHAPE ACTION

We are now back to the template, hide the **Salt and Sugar - OUTPUT** layer, select again the starting Salt and Sugar logo and this time apply the Shape action.

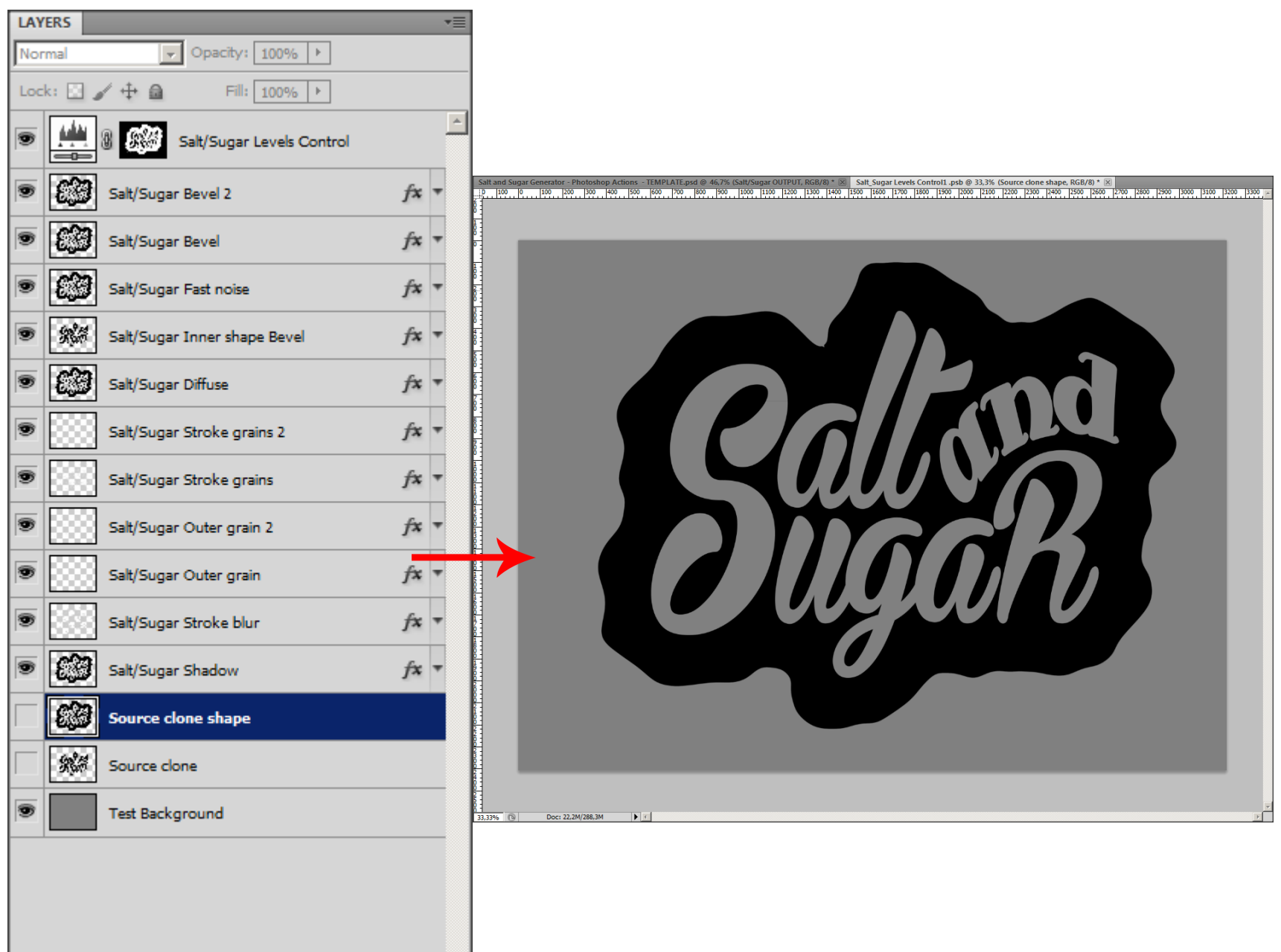
This action will generate another Salt and Sugar - Output but this time it has created a shape around the starting element to get an inverted effect.



# SHAPE ACTION OUTPUT

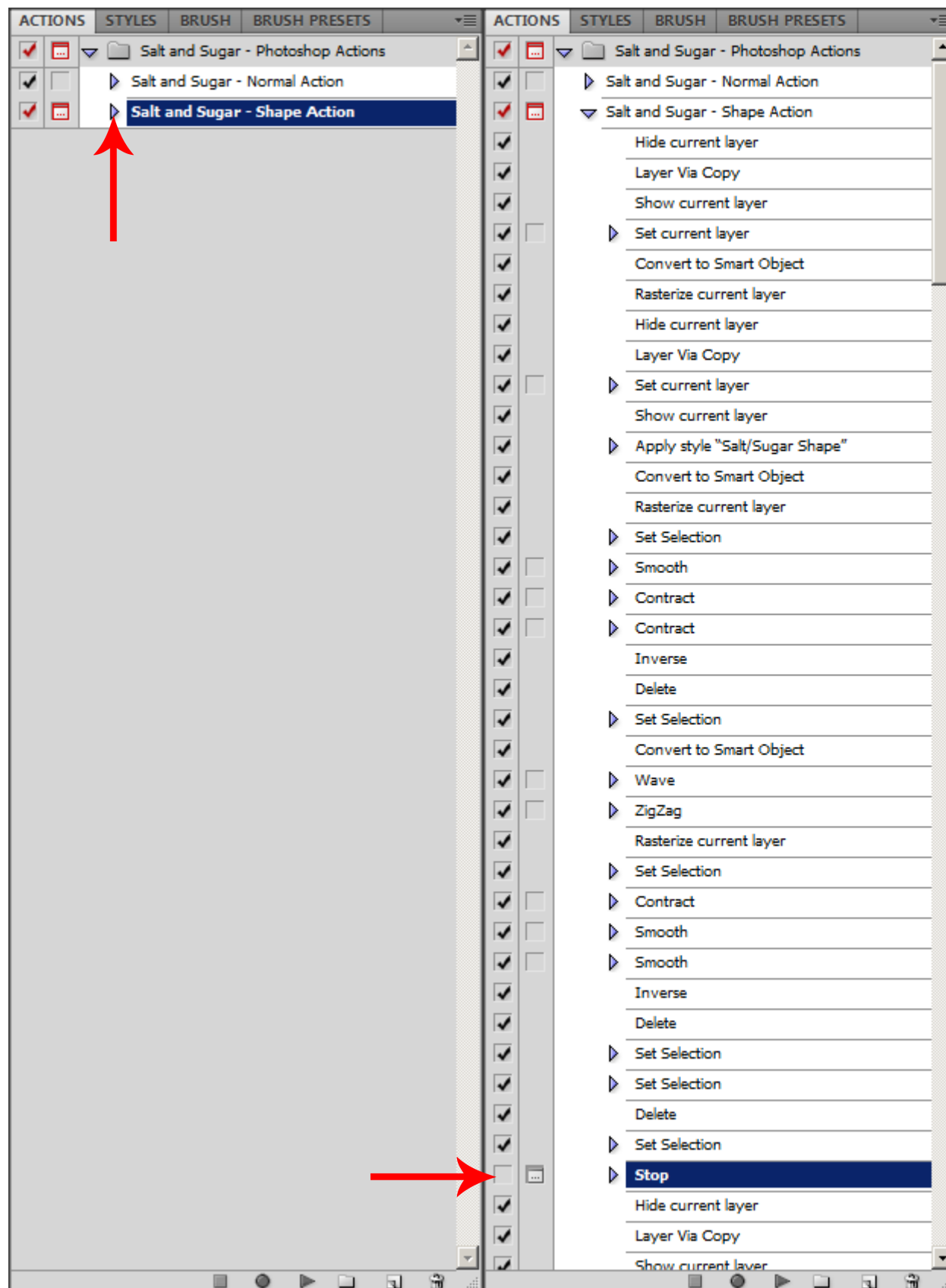
The content inside the shape action output is similar to the normal action. There are two hidden layers a clone of the source element and the shape the action has generated before applying the Salt/Sugar Effect.

The settings used in the shape action are a bit different than the normal one, If for example you want to customize (change the aspect) the **Source clone shape** and **then apply the Normal action to it**, you can do it and the result will be nice, but see in the next chapter a better way.



# CUSTOM SHAPE

Go to the action panel and click on the **arrow of the shape action** to open it and to see it's content. You can't see the whole action in the image but notice the STOP at the bottom, it's inactive, click the box to activate it. This stop is placed where the shape is finished and before applying the Salt/Sugar effect.

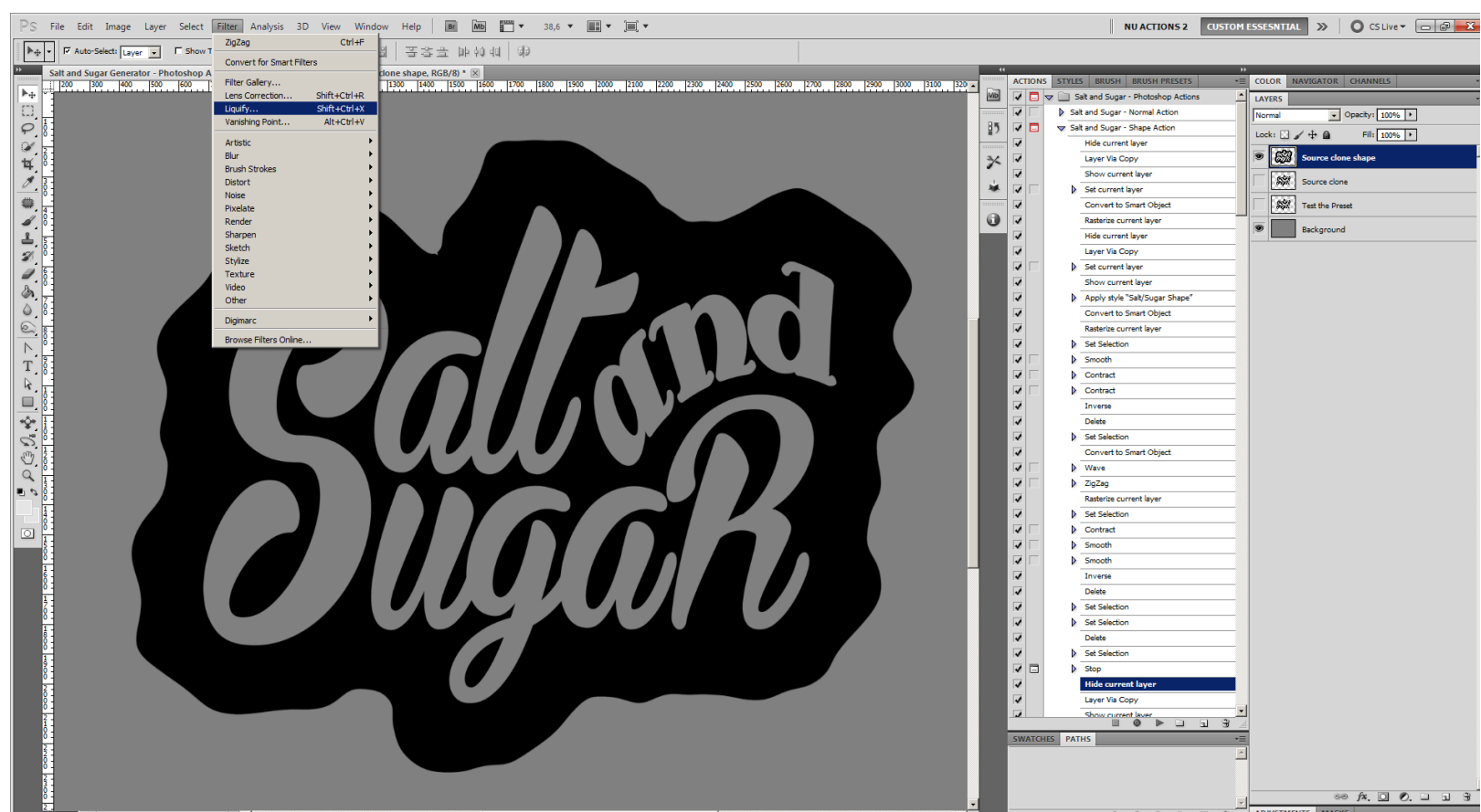


# CUSTOM SHAPE

You can clear your template from the old outputs and redundant files if wanted, keep only the starting logo and the background.

Select the starting logo and apply again the shape action, in the previous image you can see that i have the stop selected, make sure to select the “Action’s title” and not the stop before applying it.

This time it will stop after finishing the Source clone shape. Now you can customize this layer for example with a black brush modify the outside shape, try also liquify and other effects from menu Filter.



# CUSTOM SHAPE

After the customization is done, go to the action panel, this time **select the command after the STOP, wich is 'Hide current layer'** and click play, the action will continue from where it was stopped and will apply the Salt/Sugar effect to the customized shape. Remember to don't change the naming of the layers untill you've finished the procedure.

